



# Study Skills

Practice Testing – Using Past Papers

**Knowledge and  
understanding  
of theory**

**Practice  
recalling theory**

**Practice  
applying theory  
in an exam  
context**

Practice

**HIGH  
IMPACT**

Testing

# Why use past exam papers?

- Identify areas of strength and development
- Develop exam technique
- Develop exam pace
- See improvements and whether revision is having an impact

# Why use past exam papers?

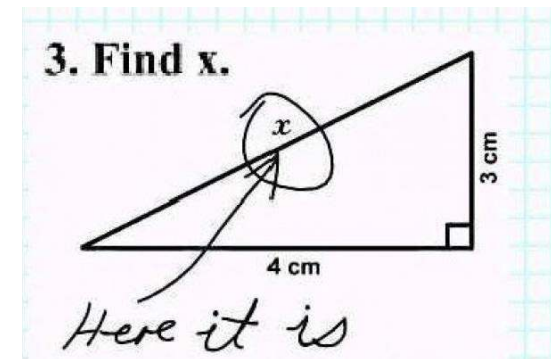
- Identify areas of strength and development

What do you know already?

What do you need to work on?

# Why use past exam papers?

- Exam technique
- Reading the question carefully
- Reading data to use in the questions
- Following the command words carefully (explain, describe etc.)
- Including the right key words
- Showing working out
- Including units



13 Melissa has two identical radiators.

One contains water and the other contains oil.

		
Contents of radiator	25 kg of water	25 kg of oil
Power of electric heater in radiator	1000W	1000W

(a) The heater in the water radiator supplies 3 150 000 J of energy to the water.

The specific heat capacity of water is 4200 J/kg °C.

The initial temperature of the water is 20 °C.

Use a calculation to predict the temperature rise of the water.

.....

.....

.....

Temperature rise ..... °C

[2]

# Why use past exam papers?

- Exam pace
- Roughly one mark = one minute
- Leave out answers and come back to them

**BUT**

- Never leave a blank answer



# Why use past exam papers?

- Check whether your revision has been successful

- If not...
- Mind maps
- Flash cards

